

Benešov - Jiráskova

Standard EN 13201 : 2015

Designer rs

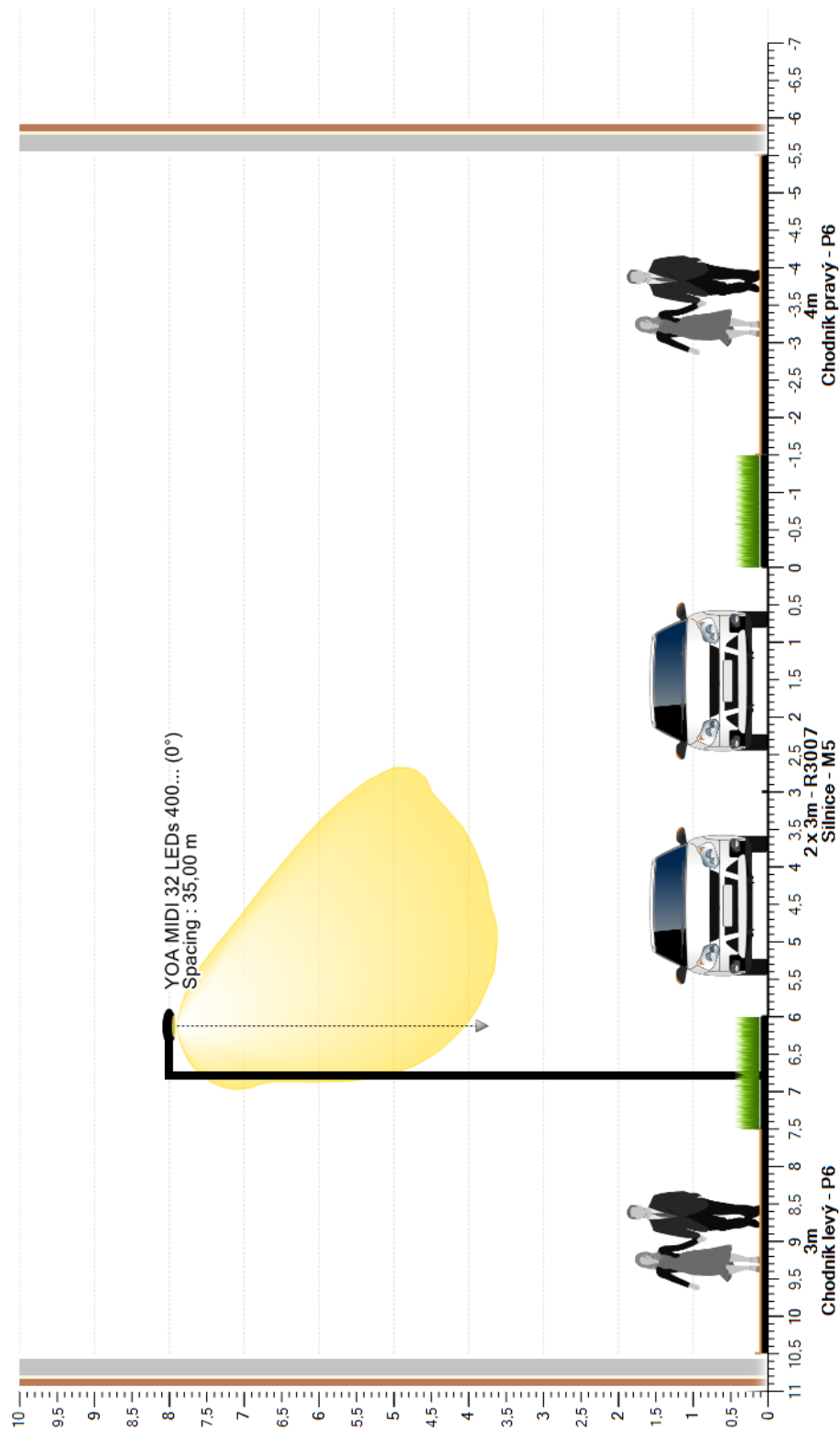
Study # 711 2021

Date 10.11.2021

Application Ulysse 3.5.3

1. Cross section

1.1. 2D View



2. Results

2.1. Grid summary

Fasáda levá (IL)

1. Y negative illuminance	Ave (A) (lx)	Min/Ave (%)	Min/Max (%)	Min (lx)	Max (lx)
Configuration	1,02	0	0	0,00	6,54

N/A

Chodník levý (IL)

P6 (IL : Min = 0,40 lux Ave = 2,00 lux)

1. Z positive illuminance	Ave (A) (lx)	Min/Ave (%)	Min/Max (%)	Min (lx)	Max (lx)
Configuration	4,00	26	10	1,04	10,97

✓

Silnice (LU)

M5 (LU : Ave = 0,50 cd/m² Uo = 35 % UI = 40 % UoW = 15 % TI : 15 % EIR : 0,30)

1. Luminance - RTable - R3007	Ave (A) (cd/m²)	Min/Ave (%)	Min/Max (%)	Min (cd/m²)	Max (cd/m²)	UL (%)
Configuration - Observer 1 (-60,00; 1,50; 1,50)	0,55	53	35	0,29	0,85	76 %
Configuration - Observer 2 (-60,00; 4,50; 1,50)	0,51	53	32	0,27	0,84	69 %

✓

✓

Silnice (IL)

1. Z positive illuminance	Ave (A) (lx)	Min/Ave (%)	Min/Max (%)	Min (lx)	Max (lx)
Configuration	7,83	45	22	3,50	15,82

N/A

Chodník pravý (IL)

P6 (IL : Min = 0,40 lux Ave = 2,00 lux)

1. Z positive illuminance	Ave (A) (lx)	Min/Ave (%)	Min/Max (%)	Min (lx)	Max (lx)
Configuration	3,52	55	32	1,92	6,11

✓

Fasáda pravá (IL)

1. Y positive illuminance	Ave (A) (lx)	Min/Ave (%)	Min/Max (%)	Min (lx)	Max (lx)
Configuration	0,69	0	0	0,00	2,68

N/A

2.2. Observer summary

Silnice (TI 1)

M5 (LU : Ave = 0,50 cd/m² Uo = 35 % UI = 40 % UoW = 15 % TI : 15 % EIR : 0,30)

	TI
Configuration - Direction (0,0)	8

Silnice (TI 2)

M5 (LU : Ave = 0,50 cd/m² Uo = 35 % UI = 40 % UoW = 15 % TI : 15 % EIR : 0,30)

	TI
Configuration - Direction (0,0)	11

3. Fixtures

3.1. YOA MIDI 32 LEDs 400mA WW730 Flat glass 5118 Back light 437212

Type YOA MIDI

Reflector 5118

Source 32 LEDs 400mA WW730

Protector Flat glass

Source flux 6,389 klm

G* 3

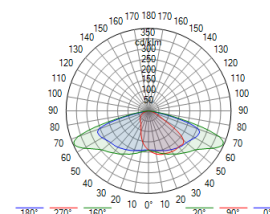
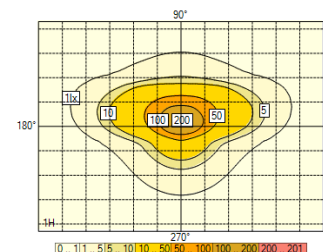
Luminaire wattage 39,5 W

MF 0,80

Matrix 437212



Luminaire flux 4,800 klm

Efficacy 122 lm/W








4. Configuration

4.1. Matrix description

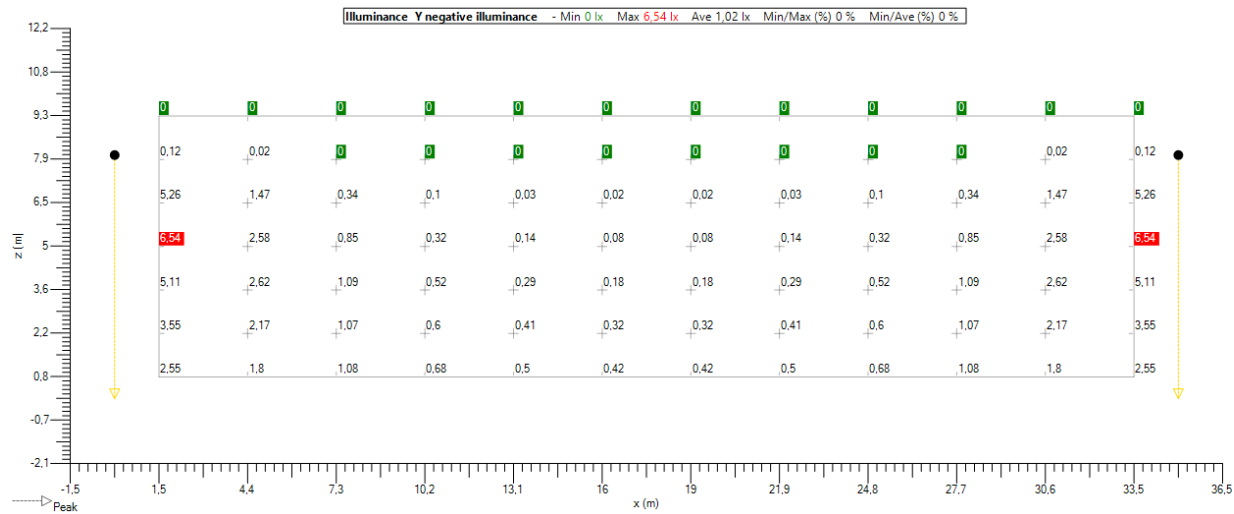
Ph. color	Description	Current [mA]	Source flux [klm]	Luminaire flux [klm]	Power [W]	Efficacy [lm/W]	MF	Height [m]	Fixture
	YOA MIDI 32 LEDs 400mA WW730 Flat glass 5118 Back light 437212	400	6,389	4,800	39,5	121	0,800	5 x 8,00	

4.2. Luminaire positions

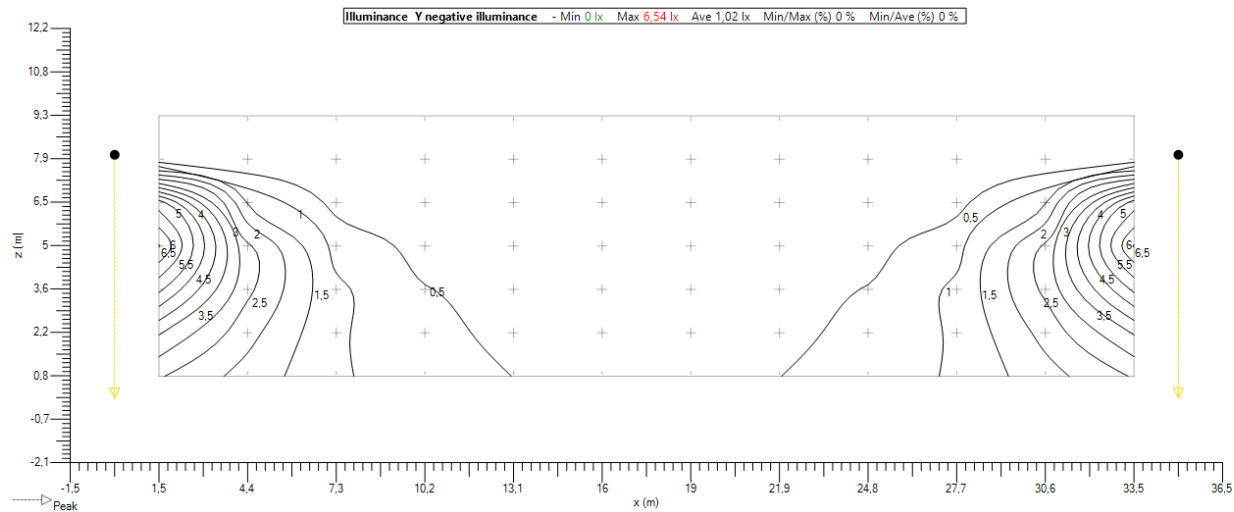
	Color	N°	Position			Luminaire							Target		
			X [m]	Y [m]	Z [m]	Name	Current [mA]	Az [°]	Incl [°]	Rot [°]	Flux [klm]	MF	X [m]	Y [m]	Z [m]
<input checked="" type="checkbox"/>		1	-35,00	6,30	8,00	YOA MIDI 32 LEDs 400mA WW730 Flat glass 5118 Back light 437212	400	180,0	0,0	0,0	6,389	0,800	-35,00	6,30	0,00
<input checked="" type="checkbox"/>		2	0,00	6,30	8,00	YOA MIDI 32 LEDs 400mA WW730 Flat glass 5118 Back light 437212	400	180,0	0,0	0,0	6,389	0,800	0,00	6,30	0,00
<input checked="" type="checkbox"/>		3	35,00	6,30	8,00	YOA MIDI 32 LEDs 400mA WW730 Flat glass 5118 Back light 437212	400	180,0	0,0	0,0	6,389	0,800	35,00	6,30	0,00
<input checked="" type="checkbox"/>		4	70,00	6,30	8,00	YOA MIDI 32 LEDs 400mA WW730 Flat glass 5118 Back light 437212	400	180,0	0,0	0,0	6,389	0,800	70,00	6,30	0,00
<input checked="" type="checkbox"/>		5	105,00	6,30	8,00	YOA MIDI 32 LEDs 400mA WW730 Flat glass 5118 Back light 437212	400	180,0	0,0	0,0	6,389	0,800	105,00	6,30	0,00

4.3. Fasáda levá (IL) - Y negative

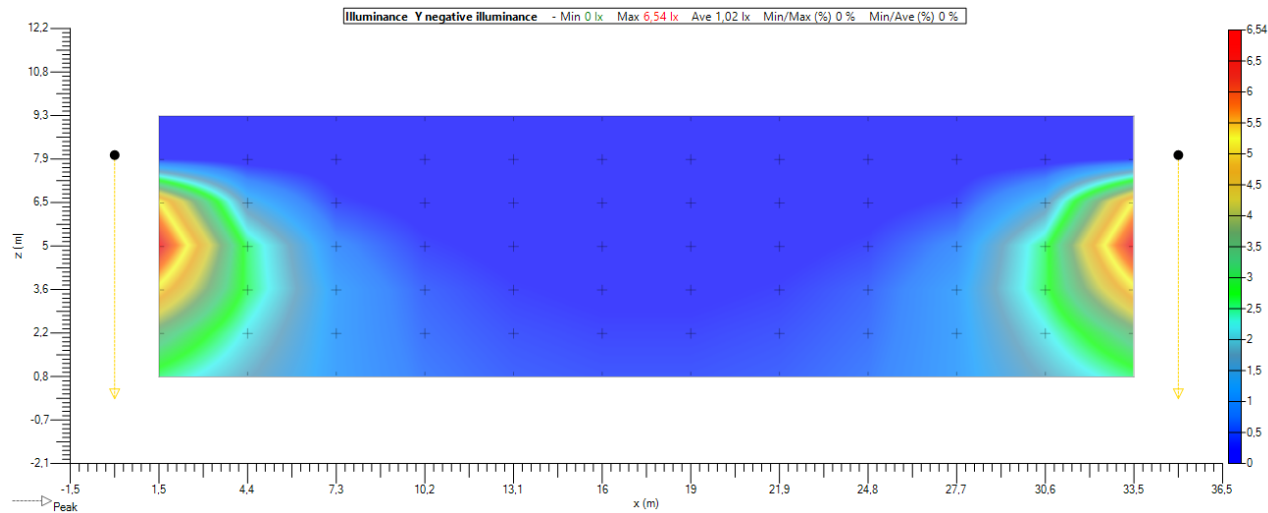
Values



Isolevel

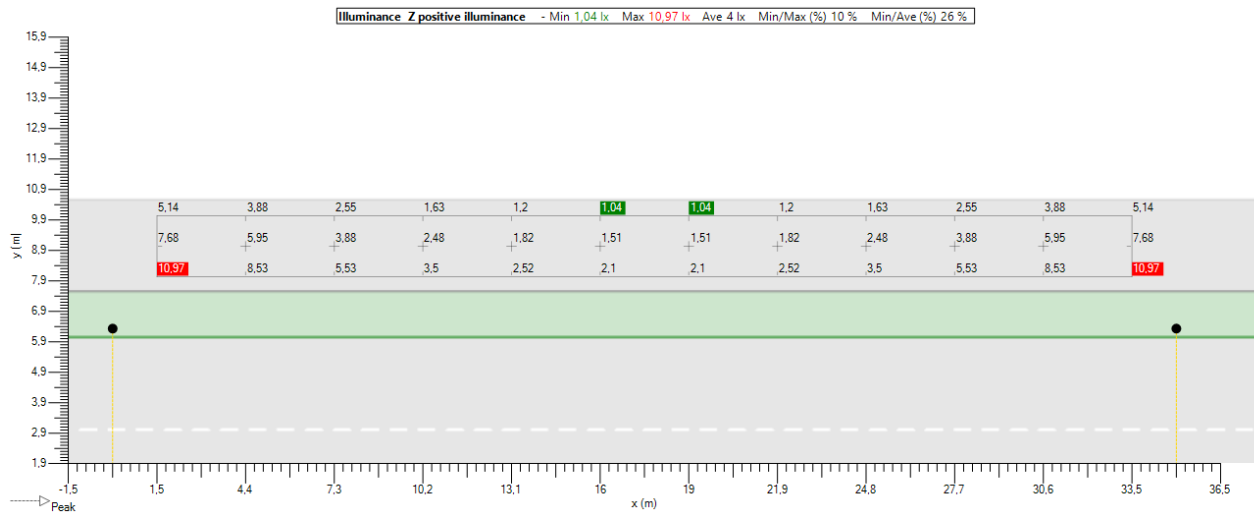


Shading

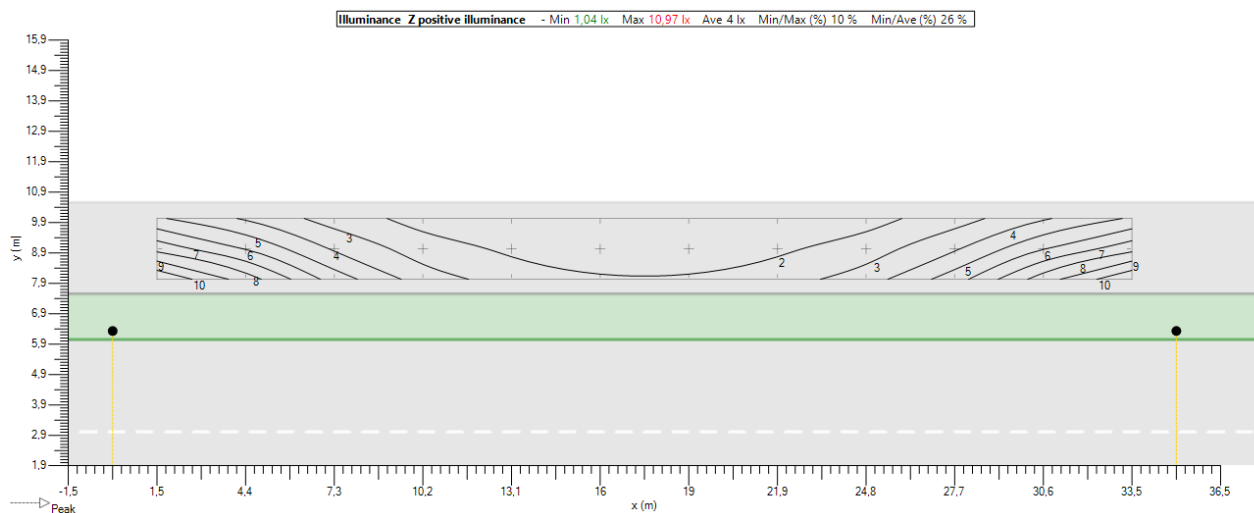


4.4. Chodník levý (IL) - Z positive

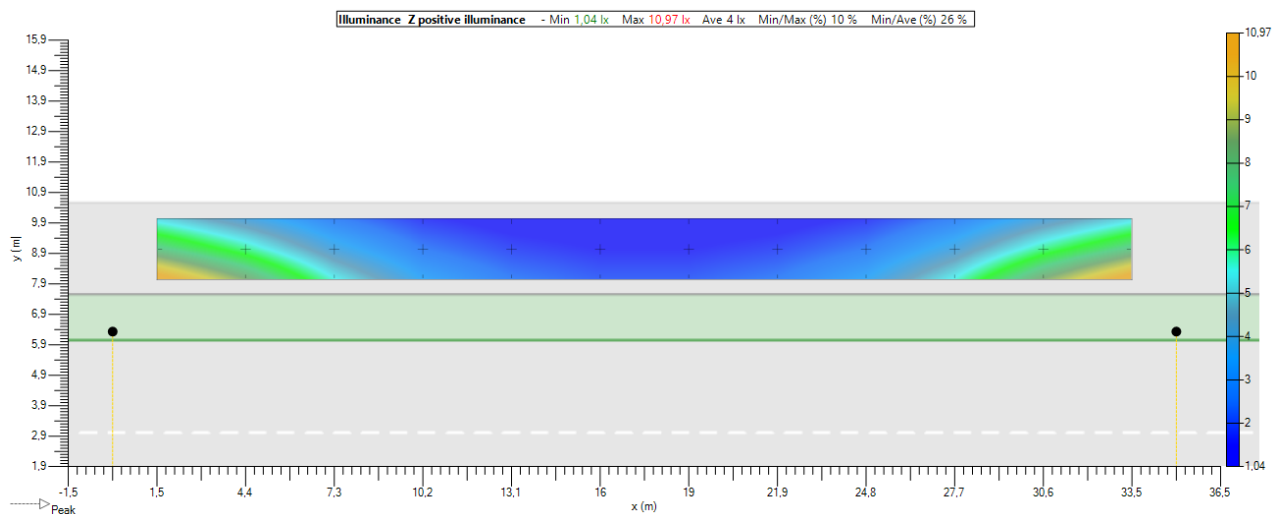
Values



Isolevel

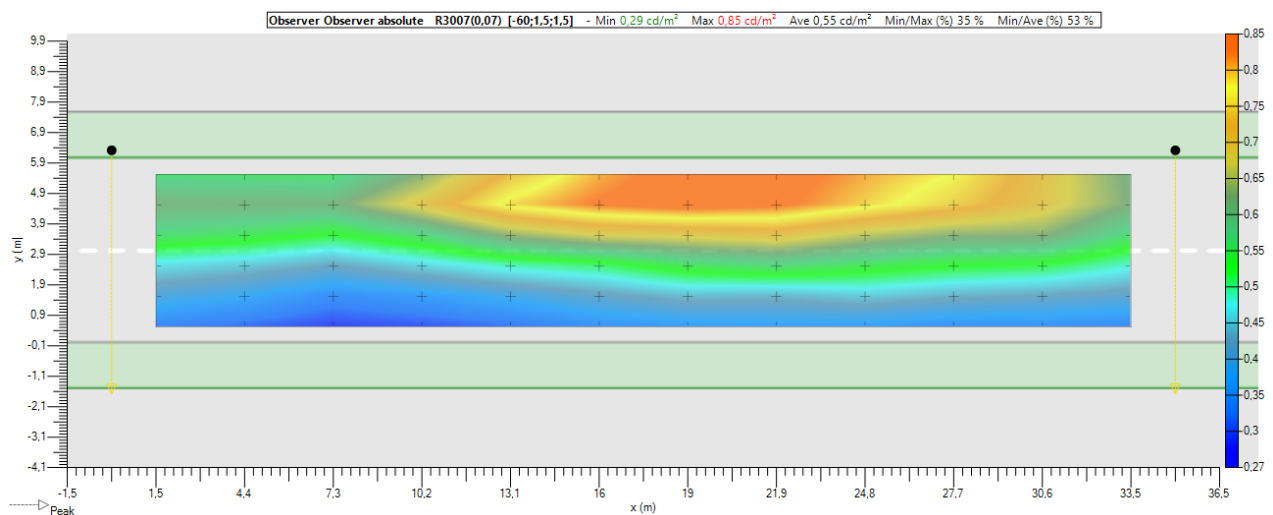
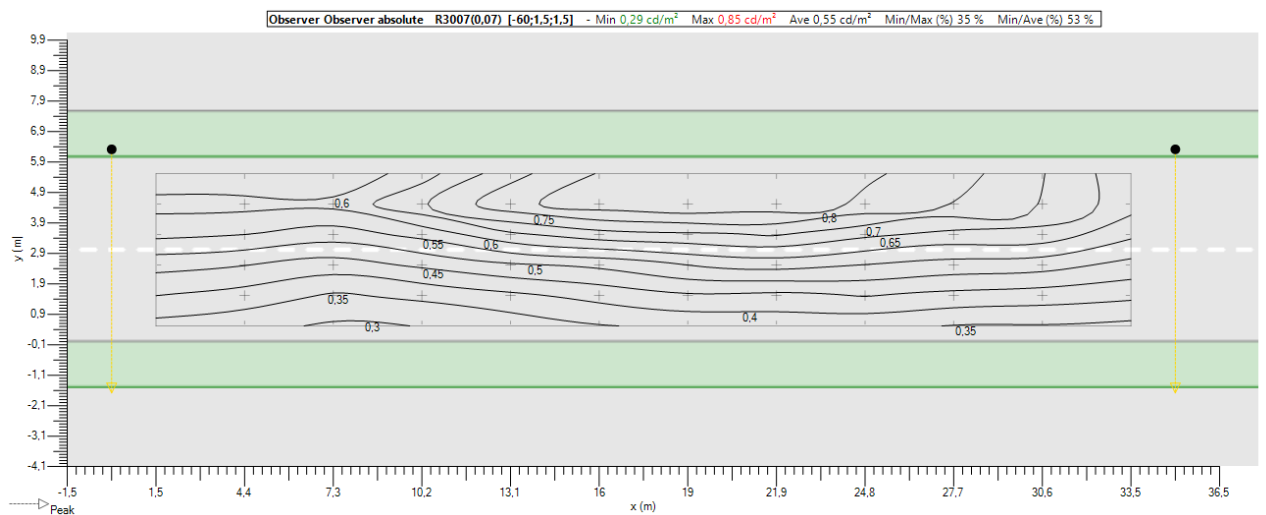
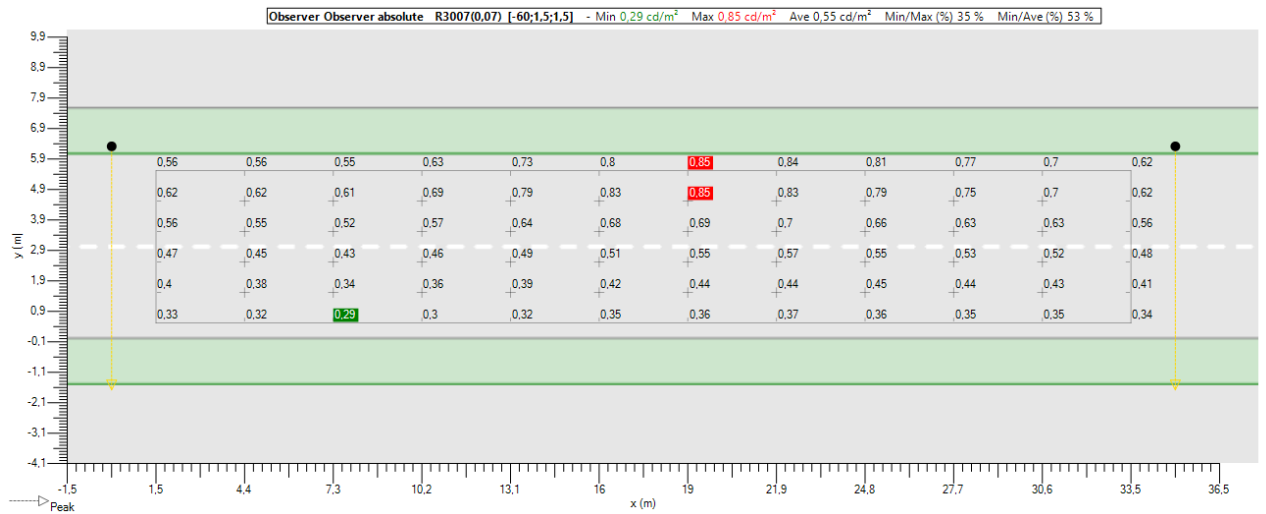


Shading

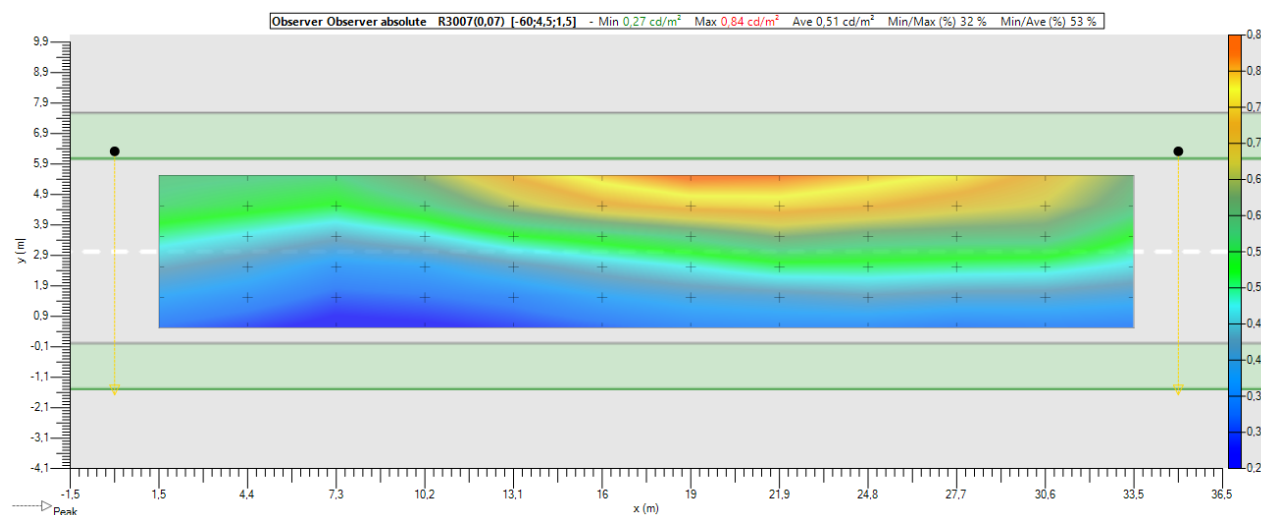
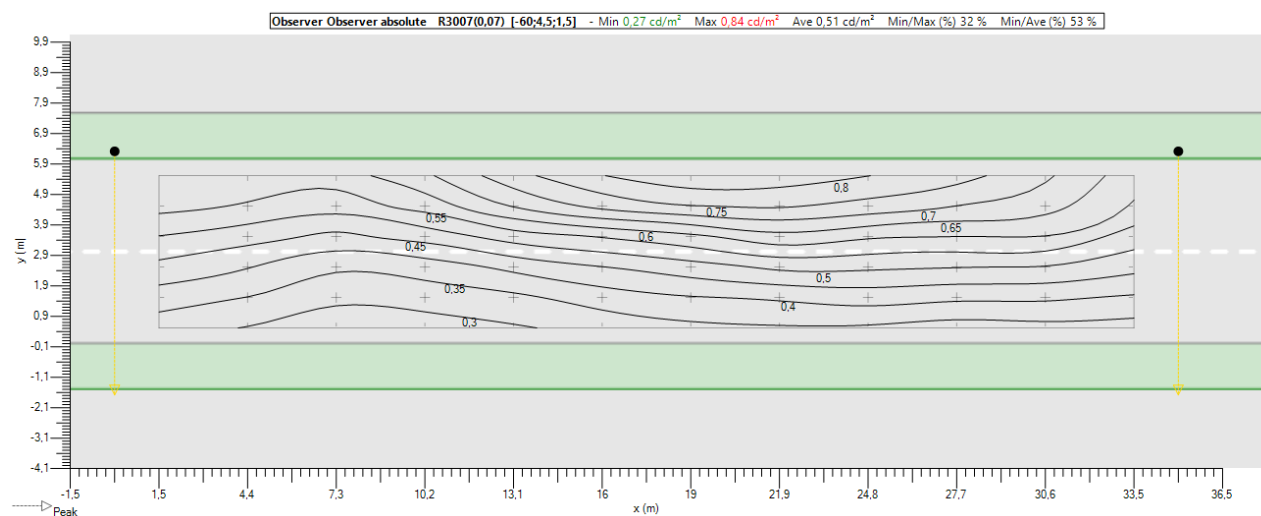
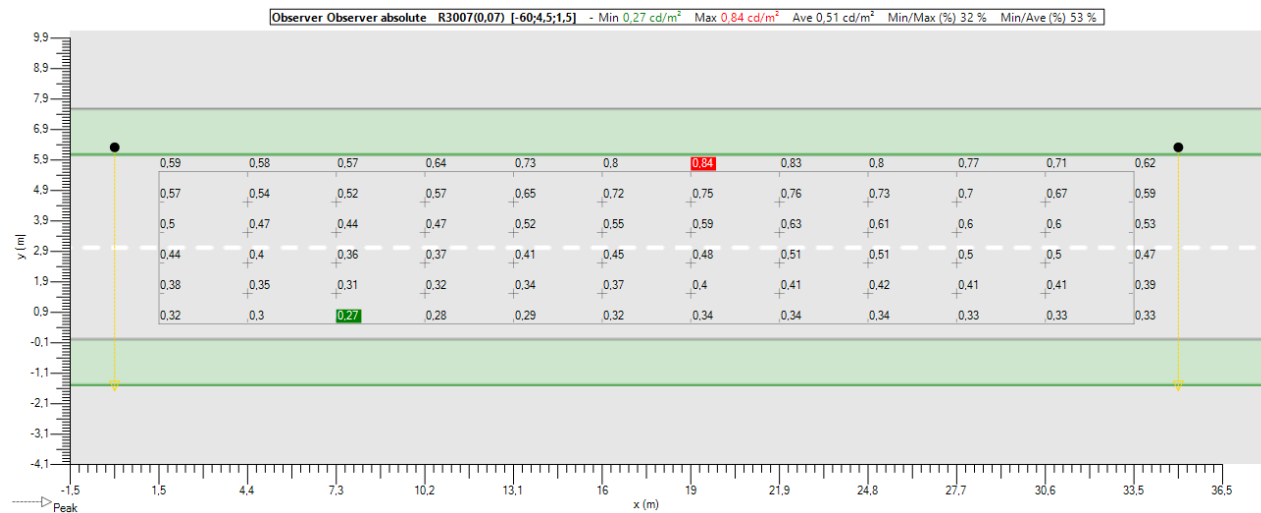


4.5. Luminance - Silnice (LU) - R3007

Silnice (LU) - Absolute 1

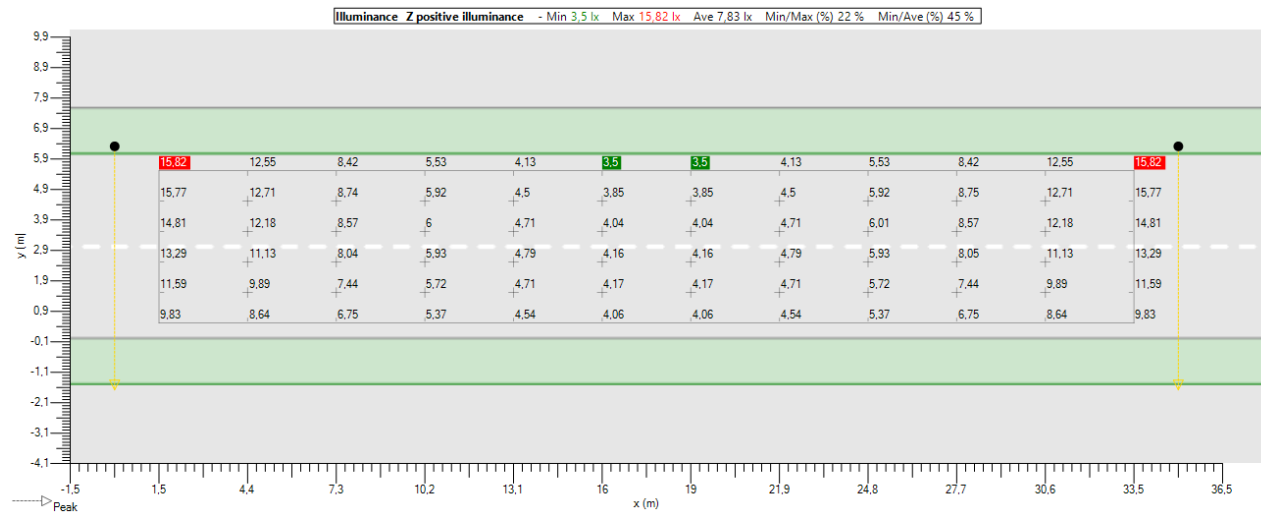


Silnice (LU) - Absolute 2

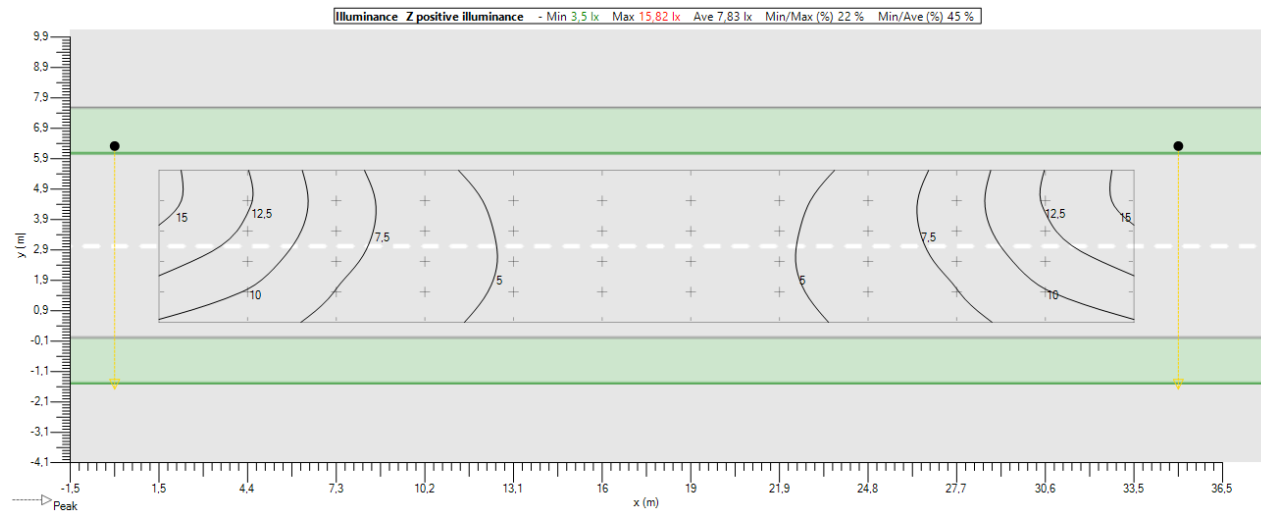


4.6. Silnice (IL) - Z positive

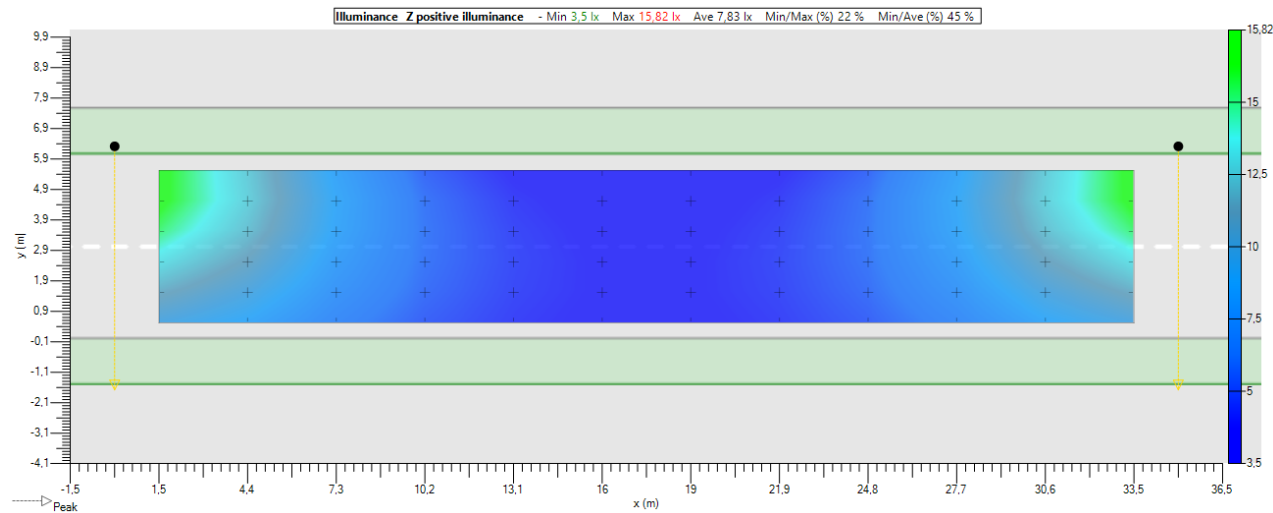
Values



Isolevel

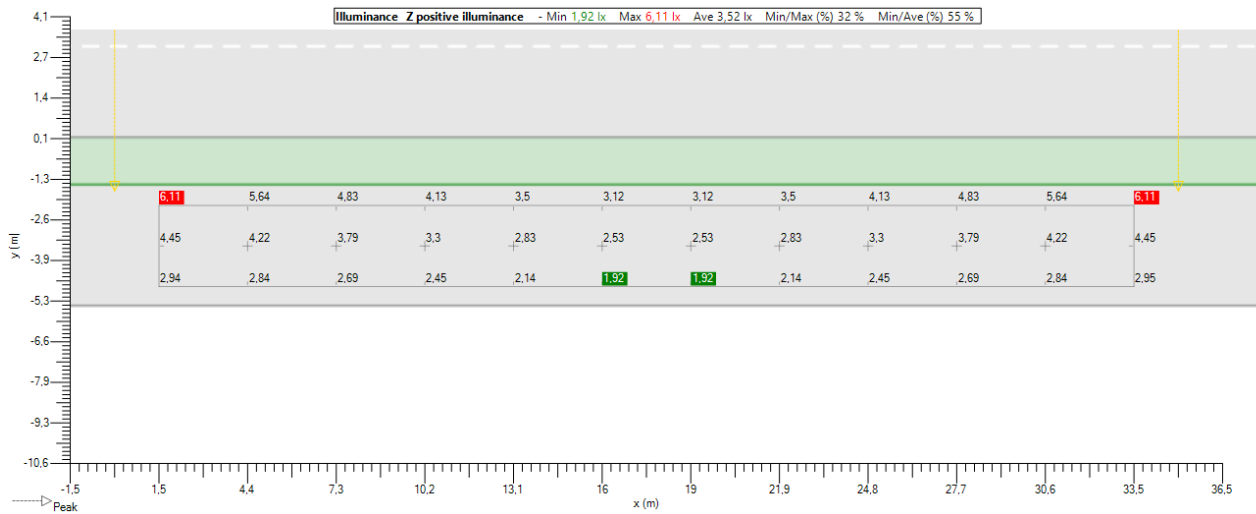


Shading

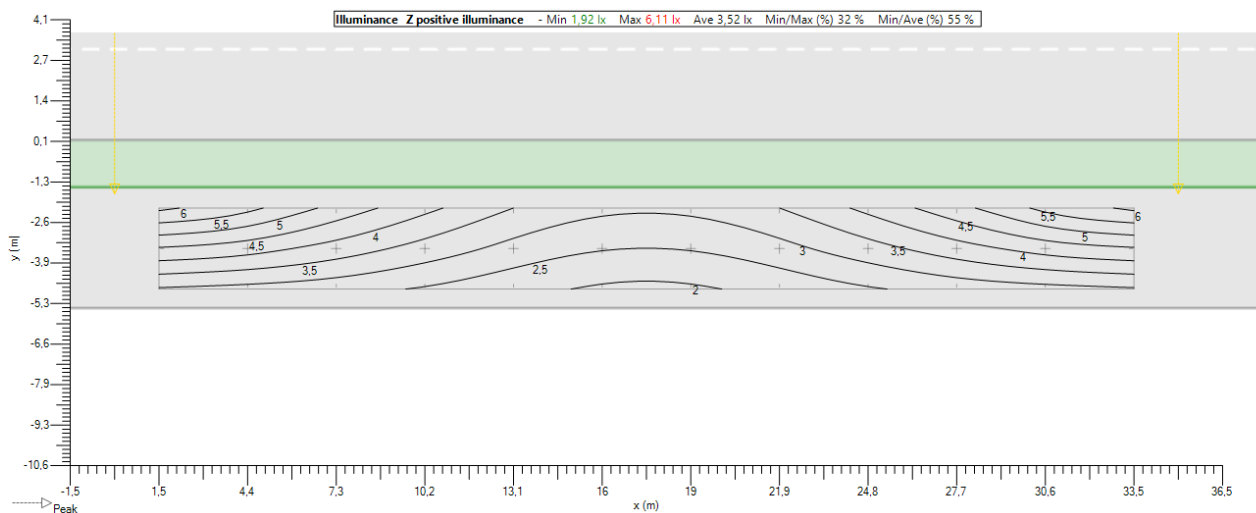


4.7. Chodník pravý (IL) - Z positive

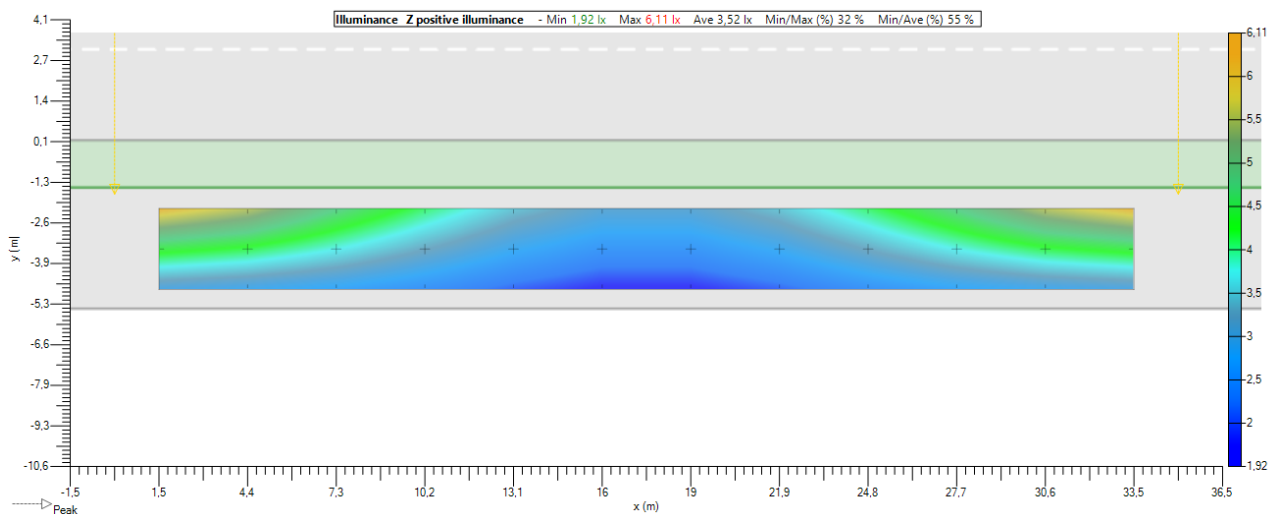
Values



Isolevel

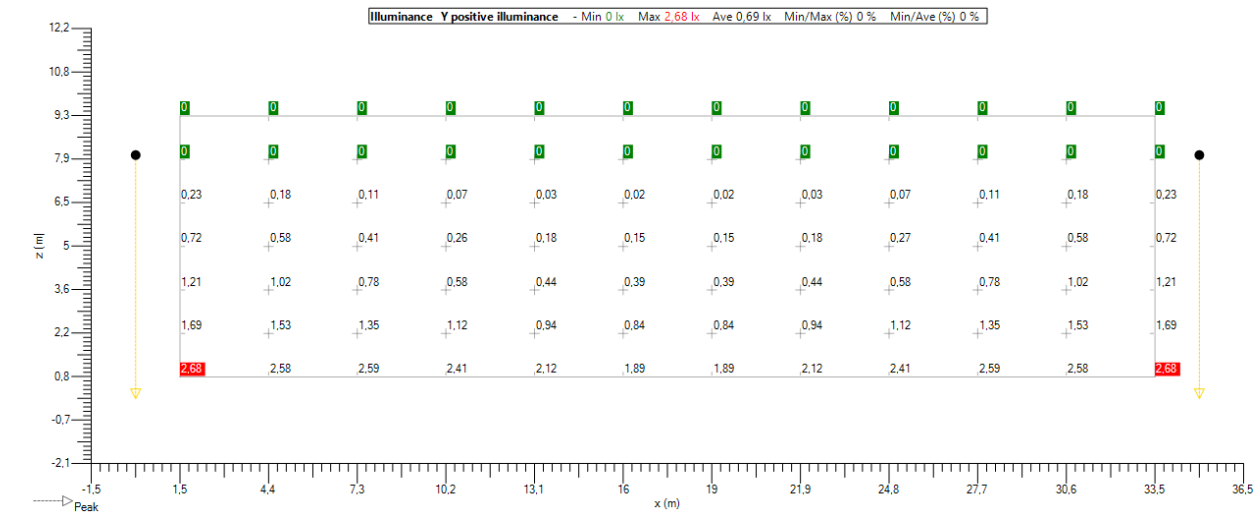


Shading

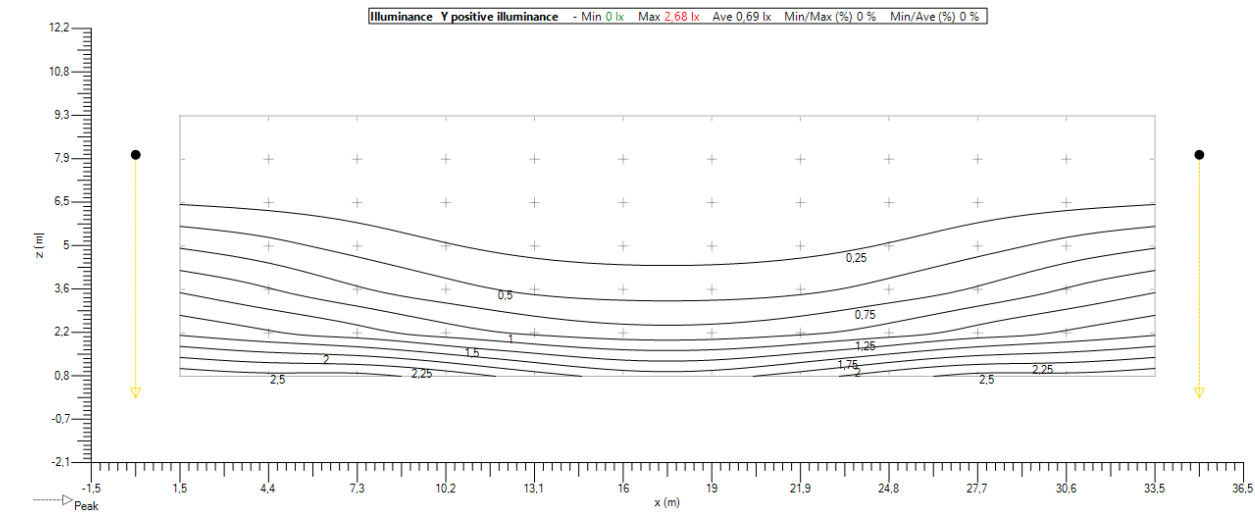


4.8. Fasáda pravá (IL) - Y positive

Values



Isolevel



Shading

